






**BENJAMIN**  
MANUFACTURING LLC


**2024**


# PRODUCT CATALOG

 BenjaminMFG

 BenjaminManufacturing

 orderdesk@benjaminmfg.com

 770-941-1433 800-343-1756

 3215 S. Sweetwater Rd  
Lithia Springs GA 30122



[www.benjaminmfg.com](http://www.benjaminmfg.com)



# TABLE OF CONTENTS

<b>NEW PRODUCT</b>	<b>03</b>	Water Heater Pans - Aluminum
<b>NEW PRODUCT</b>	<b>04</b>	Square Galvanized Pans - Water Heater and HVAC
<b>NEW PRODUCT</b>	<b>05</b>	Ball Valves - PVC and CPVC
<b>NEW PRODUCT</b>	<b>06</b>	Shower Base, Dishwasher Pans
<b>NEW PRODUCT</b>	<b>07</b>	Water Heater Stands
<b>NEW MATERIAL</b>	<b>08</b>	Water Heater Pans HDPE Plastic
<b>NEW MATERIAL</b>	<b>09</b>	HVAC Condensate Drain Pans
<b>NEW MATERIAL</b>	<b>10</b>	Washing Machine Pan - HDPE
	<b>11</b>	Tub and Shower base Protector Range
	<b>12</b>	Tub Protectors Stocking Sizes
	<b>13</b>	Tub Protectors Popular Ppecified Sizes
	<b>14</b>	Shower Base Protector Multi-fit
	<b>15</b>	Shower Base Protector Specified Sizes
	<b>16</b>	Single Adjustable Tub Protectors
	<b>17</b>	Cleanout Cover Plates
	<b>18</b>	Nipple Caddies
	<b>19</b>	Organizational Trays and Tote Trays
	<b>20</b>	Utility Tub Boxes
	<b>21</b>	Access Panels and Covers
	<b>22</b>	Shower Niche Tile Template
	<b>23</b>	Sinks   Foam Spacer and Handi Wraps





# WATER HEATER PANS ALUMINUM



## WATER HEATER PAN-ALUMINUM

- Can be installed under gas or electric water heaters to protect from water damage
- Manufactured from contractor-grade aluminum
- Available with or without a drain hole in the side
- 1" PVC drain fitting or option for CPVC (SPF-101) to allow for connection to indirect drain
- Meets requirements of Southern Building Code
- Pan depth 2.5 in
- Pan will not rust or corrode



## WATER HEATER PANS SETUP

### 1. HDPE plastic for electric water heaters

Durable and flexible - stronger and more flexible than old school styrene pans.

### 2. Aluminum pans

For any water heater

### 3. Square Galvanized Steel

For any water heater or HVAC job



This Benjamin GLOBAL PRO LINE product is sourced outside the US and meets or exceeds international industry standards and ours.

## Water Heater Drain Pan

Name	Part #	Size (ID)	Size (OD)
Aluminum Water Heater Pan Drilled	WHPA20-1D	20"	22"
	WHPA22-1D	22"	24"
	WHPA24-1D	24"	26"
	WHPA26-1D	26"	28"
	WHPA28-1D	28"	30"
	WHPA30-1D	30"	32"
PVC adapter for drain hose	SPF-100	1" Adapter	
CPVC adapter for drain hose	SPF-101	1" Adapter	
Water Heater Pan Undrilled	WHPA20-1U	20"	22"
	WHPA22-1U	22"	24"
	WHPA24-1U	24"	26"
	WHPA26-1U	26"	28"
	WHPA28-1U	28"	30"
	WHPA30-1U	30"	32"





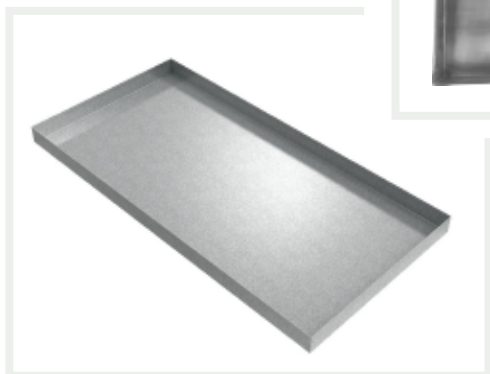
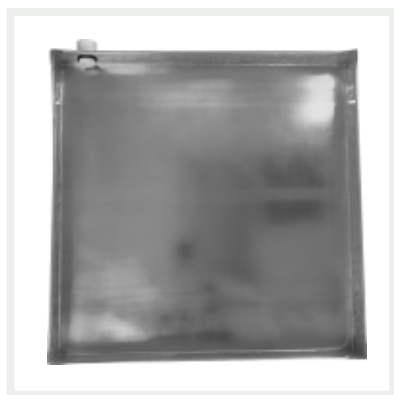
# SQUARE GALVANIZED PANS WATER HEATER AND HVAC



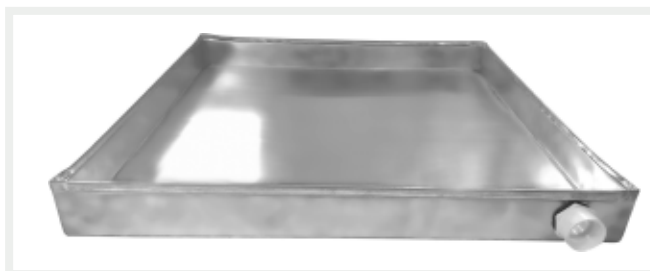
## CONTRACTOR-GRADE GALVANIZED STEEL PANS

### WITH DRAINHOLE

- 26-Gauge galvanized steel
- Heavy-duty long-lasting material
- Easy installation
- Prevents damage from leaks
- Includes 1 in. PVC Drain Fitting (CPVC available)
- 2 in. tall hemmed edges
- Water-tight sealed corners
- Pre-drilled hole near the corner of one of the edges of the pan
- Custom sizes available
- Discount available when purchased in bulk
- Undrilled versions are available



Size ID	SKU
20" Square	WHP20GS-1D
22" Square	WHP22GS-1D
24" Square	WHP24GS-1D
26" Square	WHP26GS-1D
28" Square	WHP28GS-1D
30" Square	WHP30GS-1D
32" Square	CDP3232GS
36" Square	CDP3636GS
32"x 20" Rect	CDDO3220GS
60"x 30" Rect	CDP6030GS



This Benjamin GLOBAL PRO LINE product is sourced outside the US and meets or exceeds international industry standards and ours.

[www.benjaminmfg.com](http://www.benjaminmfg.com)

4

✉ [orderdesk@benjaminmfg.com](mailto:orderdesk@benjaminmfg.com)  
☎ 770-941-1433 800-343-1756

📍 3215 S. Sweetwater Rd  
Lithia Springs GA 30122





# BALL VALVES PVC and CPVC



## PVC BALL VALVES

### PVC Schedule 40 Ball Valves

PVC Sch. 40 Ball Valves are compact and lightweight. This Slip x Slip valve is designed for a variety of applications including pressure distribution of cold water in irrigation, pool, spa, agricultural, commercial and light industrial applications.

- PVC schedule 40-construction for durability
- Full port design allows for maximum efficiency and minimal turbulence or pressure reduction
- Quarter-turn flow control for easy on and off
- NSF / ANSI standard 372 compliant
- Slip connections conform to ASTM D2468
- Working temperature range 32°F to 140°F varies by size
- Max pressure is lower at higher temperatures
- Requires solvent cement for installation (not included)



PVC BALL VALVES		
Nominal Size	SKU	Length (in)
1/2	BVP005	3
3/4	BVP075	3 1/2
1	BVP100	4
1 1/2	BVP150	5 1/8
2	BVP200	5 3/4



## CPVC BALL VALVES

- Connection type: slip x slip
- Max Pressure 235PSi and lower at higher temperatures
- Working temperature range 32°F to 200°F varies by size
- Handle Type: Tee, Handle Material: Polypropylene
- Conforms to Standard ASTM F 1970
- Requires solvent cement for installation (not included)

Nominal Size	SKU	Length (in)
1/2	BVP005	3
3/4	BVP075	3 1/2
1	BVP100	4
1 1/2	BVP150	5 1/8
2	BVP200	5 3/4



### CPVC Schedule 80 Ball Valves

Our Compact Ball Valve CPVC inline style unit is ideal for so many CPVC pipe projects.



This Benjamin GLOBAL PRO LINE product is sourced outside the US and meets or exceeds international industry standards and ours.



✉ [orderdesk@benjaminmfg.com](mailto:orderdesk@benjaminmfg.com)  
☎ 770-941-1433 800-343-1756

📍 3215 S. Sweetwater Rd  
Lithia Springs GA 30122



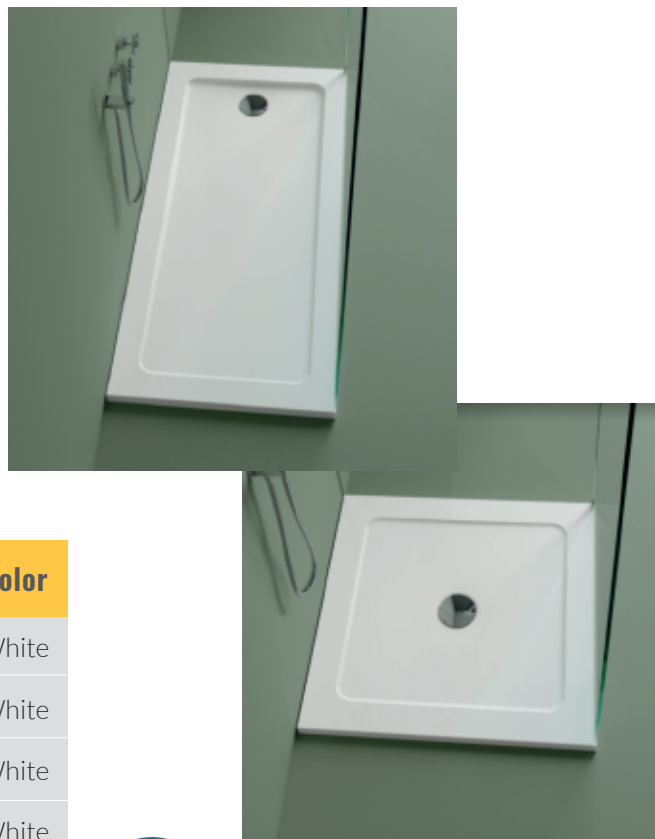
## SHOWER BASES SOLID CAST STONE



### SOLID CAST STONE

- Gorgeous, heavy, solid cast stone with smooth finish
- Multiple sizes
- Center drain for square models, reversible for rectangular
- models
- Other colors and styles available

Model Number	Size (in)	Weight (lbs)	Drain Location	Color
SHBSA3232C-Grace	32 x 32	68.34	Center	White
SHBSA4834C-Grace	48 x 34	116.84	Center	White
SHBSA3636C-Grace	36 x 36	88.18	Center	White
SHBSA6030R-Grace	60 x 30	165.35	Reversible	White
SHBSA6032R-Grace	60 x 32	174.17	Reversible	White



This Benjamin GLOBAL PRO LINE product is sourced outside the US and meets or exceeds international industry standards and ours.



### DISHWASHER PAN

- Dishwasher pan, allows you to spot any leaks immediately
- Protects your floors and surrounding fixtures in the event of a dishwasher leak
- Fits most dishwasher brands
- Dimensions: H 1 in, W 20.5 in, D 24.5 in
- Made of durable, flexible High Molecular Weight Polyethylene plastic
- 3-wall feature directs the leak to the front of the dishwasher for collection
- Flexible, high-strength plastic - won't crush during installation, crack, rust, or corrode
- Grey Matte Finish - available in grey, black or white matte finish
- Made in USA





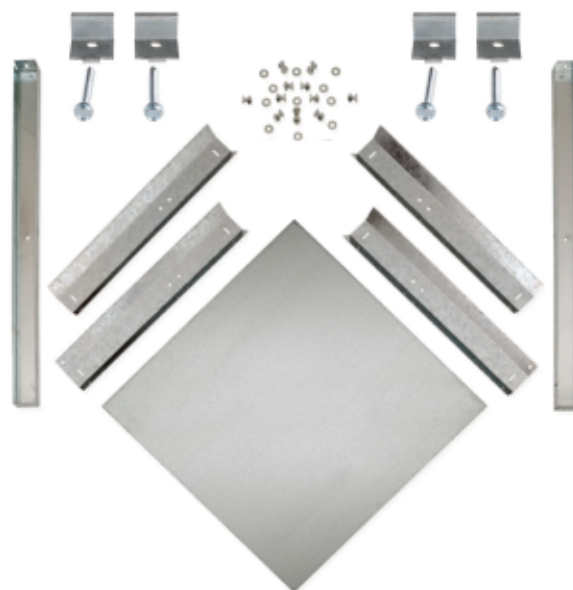
# WATER HEATER STANDS



## WATER HEATER STANDS

Our Benjamin Water Heater Stand allows placement of water heater tanks 18" above the ground as required by virtually all codes. This height requirement minimizes the risk of explosion from flammable fumes in water heaters with an ignition source. It's constructed of heavy-duty galvanized sheet metal and can accommodate up to a 50 gallon water heater. Benjamin products have earned our client's loyalty since 1967.

- Available in two sizes:
  - 21" x 21" x 18" tall
  - 24" X 24" x18" tall
- Elevates water heaters safely to a code-compliant height of 18 in. from the ground
- For use in water heaters up to 50 gallon or 650 lbs
- Built with high-quality galvanized steel
- Easy to assemble
- For gas and electric water heaters.



This Benjamin GLOBAL PRO LINE product is sourced outside the US and meets or exceeds international industry standards and ours.



7

✉ [orderdesk@benjaminmfg.com](mailto:orderdesk@benjaminmfg.com)  
☎ 770-941-1433 800-343-1756

📍 3215 S. Sweetwater Rd  
Lithia Springs GA 30122

NEW MATERIAL

# WATER HEATER PANS HDPE PLASTIC



## WATER HEATER PAN - PLASTIC

**ARE YOU STILL BUYING CRACKABLE STYRENE PANS? OUR NEW HDPE PAN NOW LEADS THE NATION**

- For Electric Water Heaters
- Now made of flexible, durable HDPE plastic-Won't break when stepped on, crushed or during shipping
- Protects against water damage caused when water heaters start leaking
- Simple to install - Just set water heater into the pan when installing
- Available with or without a drain hole in the side
- Includes 1" PVC drain adapter fitting - CPVC (SPF-101) upgrade also available
- Pans without drain holes can be drilled in the field to allow custom placement for drain in the side or bottom of the pan
- Will not rust or corrode
- Round design enables the pan to be installed in small areas
- Comes in six nominal sizes (20" - 22" - 24" - 26" - 28" - 30")
- Made in USA

Water Heater Drain Pan			
Name	Part #	Size (ID)	Size (OD)
Water Heater Pan Drilled	WHP20-1D	20"	22"
	WHP22-1D	22"	24"
	WHP24-1D	24"	26"
	WHP26-1D	26"	28"
	WHP28-1D	28"	30"
	WHP30-1D	30"	32"
PVC adapter for drain hose	SPF-100	1"	
CPVC adapter for drain hose	SPF-101	1"	
Water Heater Pan Undrilled	WHP20-1U	20"	22"
	WHP22-1U	22"	24"
	WHP24-1U	24"	26"
	WHP26-1U	26"	28"
	WHP28-1U	28"	30"
	WHP30-1U	30"	32"



**B** [www.benjaminmfg.com](http://www.benjaminmfg.com)



# HVAC CONDENSATE DRAIN PANS



- Interior Dimensions measured at bottom of pan
- Made of thick, durable, flexible HDPE material
- Simple to install - Just set underneath units
- Accommodate 8 x 8" riser blocks
- Available with or without a drain hole in the side
- 1" drain adapter fitting included (Model SPF-100) or CPVC (SPF-101) adapters available
- Pans without drain holes can be drilled in the field to allow custom placement for drain in the side or bottom of the pan
- Will not rust or corrode
- All are 2.5" deep
- Made in USA



DRAIN PANS				
Name	Part #	Description	Size (O.D.)	Size (I.D.)
Condensate Drain Pan	CDP 3026	Heavy Duty Plastic Drain Pan (no ribs)	35.5" x 28.5"	30" x 26"
	CDP 3714	Heavy Duty Plastic Drain Pan (no ribs)	40.5" x 16.5"	37.5" x 14.5"
	CDP 6030	Heavy Duty Plastic Drain Pan	65" x 34"	60" x 30"
	CDP 3232	Heavy Duty Plastic Drain Pan	36" x 36"	32" x 32"
	CDP 3220	Heavy Duty Plastic Drain Pan	36" x 24"	32" x 20"







# WASHING MACHINE PANS - HDPE



## WASHING MACHINE PANS

- Now made of flexible, durable HDPE plastic-Won't break when stepped on, crushed or during shipping
- Now available in black and white
- Available with or without a drain hole in the side
- Includes 1" PVC drain adapter fitting (CPVC upgrade also available)
- Different model numbers for each option makes it easy to get the pan you want
- Can be drilled in the field to allow custom placement of drain in the side or bottom of pan
- Made in USA



UNDRILLED



DRILLED



Are you still buying crackable styrene pans? Our flexible HDPE pans are the only ones that pass the "Boot test"

Washing Machine Pans		
Name	Part #	Description
Undrilled White	WMSP-1U	O.D. 32" x 30" I.D. 30" x 28" to fit all standard machines
Drilled White	WMSP-1D	O.D. 32" x 30" I.D. 30" x 28" to fit all standard machines
Undrilled Black	WMSP-B1U	O.D. 32" x 30" I.D. 30" x 28" to fit all standard machines
Drilled Black	WMSP-B1D	O.D. 32" x 30" I.D. 30" x 28" to fit all standard machines



[www.benjaminmfg.com](http://www.benjaminmfg.com)

# TUB AND SHOWER BASE PROTECTOR RANGE



## TUB PROTECTORS



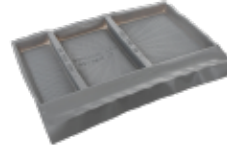
**Stocking Sizes  
(3-5)**

**Spec Sizes  
(95+)**



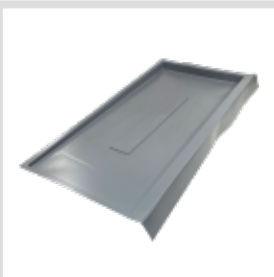
**Single Pack  
Adjustable Reusable  
(1)**

## SHOWER BASE PROTECTORS



**Stocking Sizes  
(1)**

**Spec Sizes  
(25+)**



**Single Pack  
Multifit Reusable  
(1)**

- Benjamin is the only manufacturer of Shower Base Protectors in the world
- We have 100 plus sizes for tubs and showers used in multi family jobs
- We are the only maker of tub protectors outside of the 3 industry-standards sizes
- Try the single pack products- easy to stock and sell
- Private Labeling available for all tub and shower base protectors at minimum quantities

**B** [www.benjaminmfg.com](http://www.benjaminmfg.com)

✉ [orderdesk@benjaminmfg.com](mailto:orderdesk@benjaminmfg.com)  
☎ 770-941-1433 800-343-1756

📍 3215 S. Sweetwater Rd  
Lithia Springs GA 30122

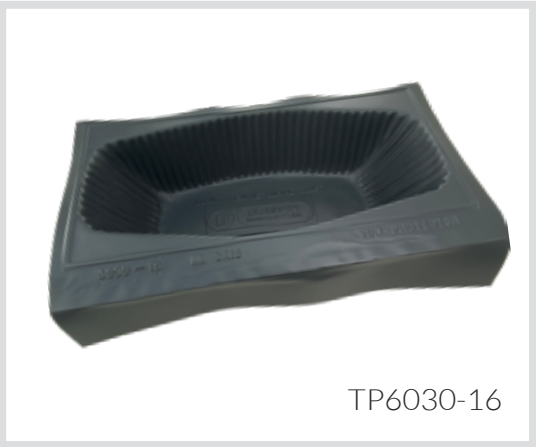


# TUB PROTECTORS STOCKING SIZES



## THE GLOBAL LEADER IN TUB PROTECTORS SINCE 1983

- With or without foam as desired
- Made of heavy gauge high-impact plastic (HIPS/Styrene)
- Soft foam bottom grips tub surface to help protect the finish from tool drop and the abrasive action resulting from a protector moving under workman's feet
- No setup or assembly time - Just pull out of the box and drop it into the tub
- Nest together for space-saving storage
- Durable protectors - can often be reused
- Can private label for your independent chain or store depending on quantity
- Boxed on pallet or bulk on pallet for shipping savings
- Made in USA



TP6030-16



TP6042

Tub Protectors		
Name	Part #	Size
Foam Bottom Tub Protectors	TP6030-14	60" x 30" x 14"
	TP6030-16	60" x 30" x 16"
	TP6042-16	60" x 42" x 16"
No Foam Bottom Tub Protectors	TP6030-14-NF	60" x 30" x 14"
	TP6030-16-NF	60" x 30" x 16"
	TP6042-16-NF	60" x 42" x 16"



[www.benjaminmfg.com](http://www.benjaminmfg.com)

✉ [orderdesk@benjaminmfg.com](mailto:orderdesk@benjaminmfg.com)  
☎ 770-941-1433 800-343-1756

📍 3215 S. Sweetwater Rd  
Lithia Springs GA 30122



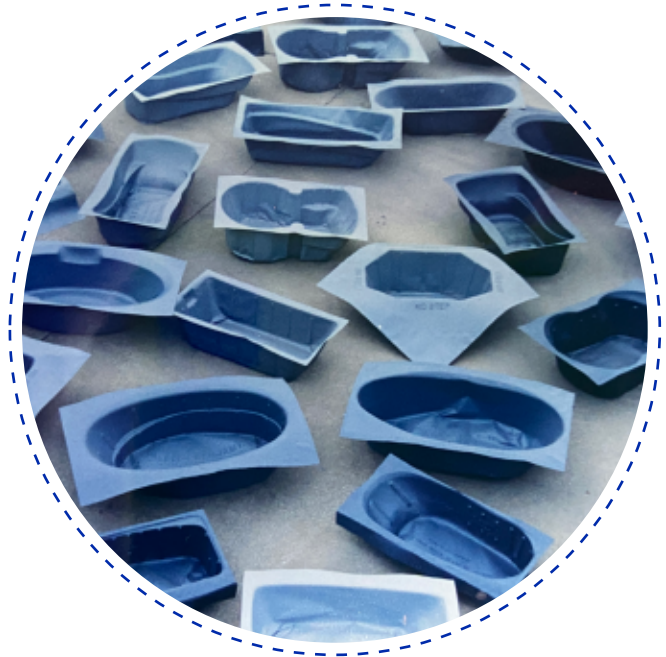
# TUB PROTECTORS

## POPULAR SPECIFIED SIZES



### WE CAN FIT VIRTUALLY ANY TUB BRAND/MODEL

- We produce 95 other sizes of tub protectors which fit virtually any tub model
- With or without Foam as desired
- Normally produced in 48 hours
- Made of heavy gauge high-impact plastic (HIPS/Styrene)
- Soft foam bottom grips tub surface to help protect the finish from tool drop and the abrasive action resulting from a protector moving under workman's feet
- Drop-in ready
- Nest together for space-saving storage
- Can private label for your independent chain or store depending on quantity
- Bulk can ship up to 315 on one pallet – shipping savings for you
- Made in USA



**ONLY MANUFACTURER OF NON-STANDARD**

**TUB PROTECTOR SIZES**

### ORDER PROCESS

**1**

Send us OEM tub spec sheet or model number

**2**

Benjamin reverts same day with our tub protector sku & prices

**3**

Choose your

- Quantity
- Bulk on pallet or boxed
- Foam / no Foam

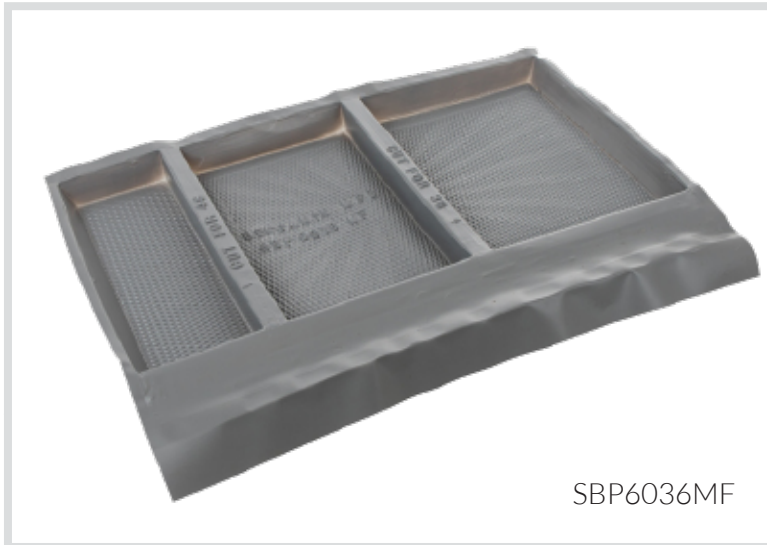
**B** [www.benjaminmfg.com](http://www.benjaminmfg.com)

**13**

✉ [orderdesk@benjaminmfg.com](mailto:orderdesk@benjaminmfg.com)  
☎ 770-941-1433 800-343-1756

📍 3215 S. Sweetwater Rd  
Lithia Springs GA 30122

# SHOWER BASE PROTECTORS MULTI-FIT



SBP6036MF

## MULTI-FIT SHOWER BASE PROTECTORS

Use right out of the box for **60" x 32", 60" x 34", 60" x 36"** bases

-or-

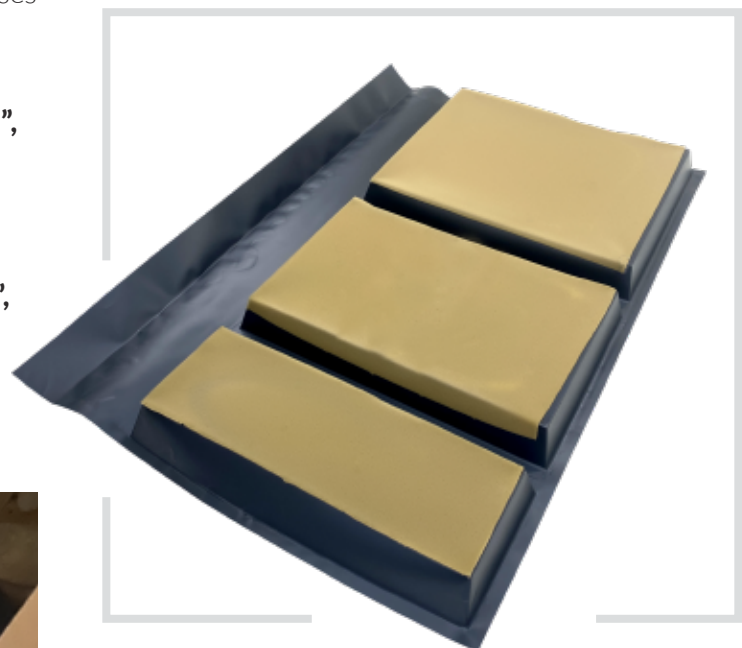
Cut off the small end on the left side for use in **48" x 32", 48" x 34", 48" x 36"** bases

-or-

Cut off the large end on the right side for use in **36" x 32", 36" x 34", 36" x 36"** bases

## 66% OF NEW/RENOVATED BATHROOMS GET SHOWERS VS. TUBS

- Made of high-impact plastic with foam pad bottom
- Foam pad grips the shower base to protect finish from abrasive action.
- Nest together for space-saving storage.
- Fits left hand, right hand, or center drain pans.
- Boxed on pallet or bulk on pallet for shipping savings
- With or without Foam as desired
- Made in USA



✉ [orderdesk@benjaminmfg.com](mailto:orderdesk@benjaminmfg.com)  
☎ 770-941-1433 800-343-1756

📍 3215 S. Sweetwater Rd  
Lithia Springs GA 30122

# SHOWER BASE PROTECTORS

## SPECIFIED SIZES



THE GLOBAL LEADER IN PROTECTORS SINCE 1983

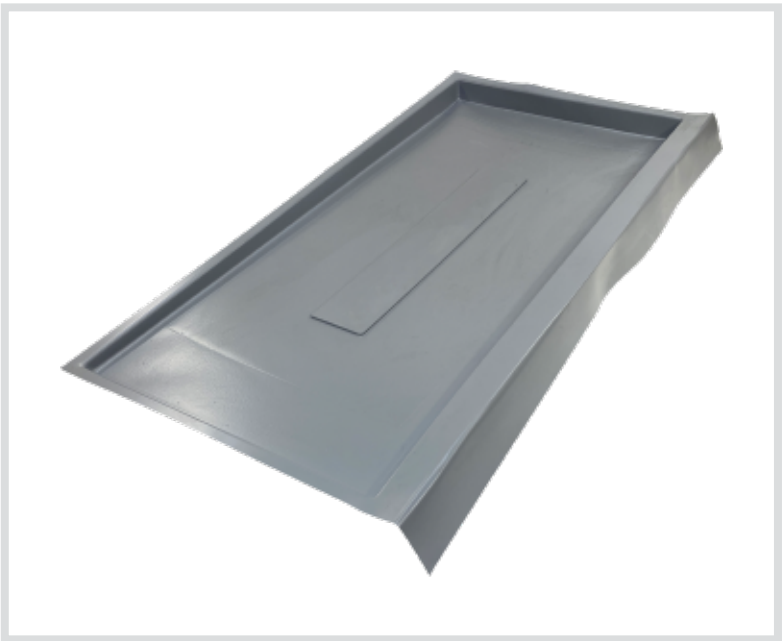
### FIXED SIZES

- Over 25 sizes available-call us!
- Sloping floor and level floor/traditional basin alternatives
- Right, left and center drain alternatives
- Normally made within 48 hours of order
- Boxed on pallet or bulk on pallet for shipping savings
- With or without Foam as desired
- Can private label for your independent chain or store

### Shower Base Protectors

Name	Part #	Size
Shower base Protector - level floor	Call for quotes	36" x 34" 36" x 36" 48" x 34" 48" x 36" 60" x 34" 60" x 36"
Shower base protector - sloped floor (RH or LH)	Call for quotes	48" x 36" 60" x 30" 60" x 32" 60" x 34" 60" x 36" 66" x 34" 72" x 34"

CALL FOR OTHER SIZES



25+ fixed sizes

[www.benjaminmfg.com](http://www.benjaminmfg.com)

15

[orderdesk@benjaminmfg.com](mailto:orderdesk@benjaminmfg.com)  
 770-941-1433 800-343-1756

3215 S. Sweetwater Rd  
Lithia Springs GA 30122

# SINGLE ADJUSTABLE TUB PROTECTORS



## THE LEADING ADJUSTABLE FOAM-BASED TUB PROTECTOR IN SINGLE-PACKED REUSABLE POLYETHYLENE

### MODEL TP6030-LDPE

*AN INEXPENSIVE WAY TO PROTECT YOUR VALUABLE TUB.*

- Made of heavy gauge flexible LDPE plastic-durable, foldable, reusable over and over
- Translucent material for aesthetics
- Soft foam bottom grips tub surface to help protect the finish from the abrasive action resulting from a protector moving under workman's feet
- Helps protect from dropped tools
- Fits both left and right-hand drain tubs
- No setup or assembly time as you just pull out of the box and drop it into the tub
- Made in USA



# SINGLE MULTIFIT SHOWER BASE PROTECTORS

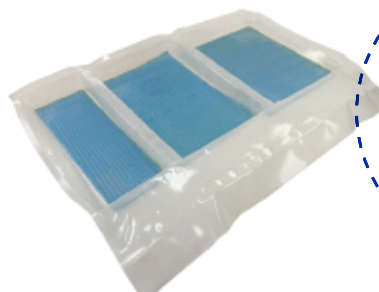
## POLY SHOWER BASE PROTECTOR-MULTIFIT

### SINGLE-PACKED

### MODEL SBP 6036MF-LDPE

*PROTECT YOUR SHOWER BASE FROM DAMAGE DURING CONSTRUCTION.*

- Made of heavy gauge flexible LDPE plastic-durable, foldable, reusable over and over
- Translucent material for aesthetics
- Soft foam bottom grips shower surface to help protect the finish from the abrasive action resulting from a protector moving under workman's feet
- Helps protect from dropped tools
- Fits left hand, right hand, or center drain pans
- No setup or assembly time as you just pull out of the box and drop it into the shower base. Cut to size per below instructions as necessary.
- Made in USA



Use right out of the box for **60" x 32", 60" x 34", 60" x 36"** bases

Cut off the small end on the left side for use in **48" x 32", 48" x 34", 48" x 36"** bases

Cut off the large end on the right side for use in **36" x 32", 36" x 34", 36" x 36"** bases

**Fits 9 sizes of shower bases**



✉ [orderdesk@benjaminmfg.com](mailto:orderdesk@benjaminmfg.com)  
☎ 770-941-1433 800-343-1756

📍 3215 S. Sweetwater Rd  
Lithia Springs GA 30122



# CLEAN-OUT COVER PLATES

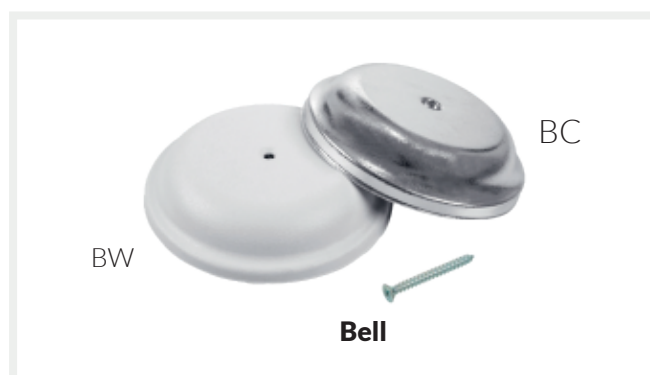
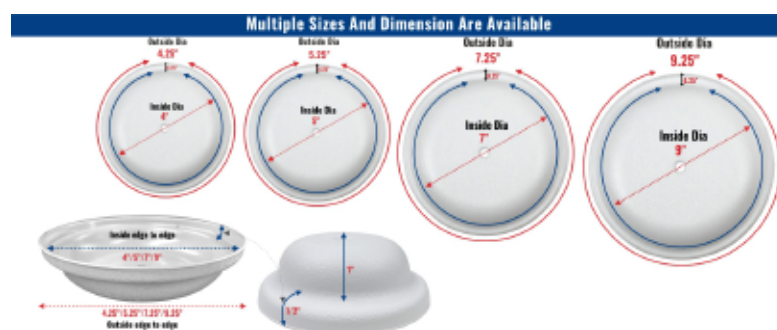


## Clean-out Covers Plates - Bell

Part #	Description	Finish
104BC	4 1/4 BELL	CHROME
104BW	4 1/4 BELL	WHITE
105BC	5 1/4 BELL	CHROME
105BW	5 1/4 BELL	WHITE
107BC	7 1/4 BELL	CHROME
107BW	7 1/4 BELL	WHITE
109BC	9 1/4 BELL	CHROME
109BW	9 1/4 BELL	WHITE

## Clean-out Covers Plates - Flat

Part #	Description	Finish
104FC	4 1/4 FLAT	CHROME
104FW	4 1/4 FLAT	WHITE
105FC	5 1/4 FLAT	CHROME
105FW	5 1/4 FLAT	WHITE
107FC	7 1/4 FLAT	CHROME
107FW	7 1/4 FLAT	WHITE
109FC	9 1/4 FLAT	CHROME
109FW	9 1/4 FLAT	WHITE



## CLEANOUT COVER PLATES

- Available in chrome/matte finish (stops unsightly scratches & marks) or pure white/matte finish (paintable)
- Bell (1.5" high) or Flat (0.5" high) shapes
- Made of durable, high-impact plastic (will not rust or corrode)
- Provided with #14 screw (easy installation into plastic plug)
- Each cover plate is individually bagged
- High quality and inexpensive



# NIPPLE CADDIES



## NIPPLE CADDIES

- Made of high-density polyethylene
- Will withstand harsh chemicals, acids, and oil
- Will not rust or corrode or cause nipples to rust
- When bent or crushed, will spring back into shape
- Great in cold weather (material tested to minus 40°F)
- Drain holes in the bottom let caddy drain
- Strong enough to take abuse yet half the weight of metal
- The bottom design holds nipples up and keeps them out of the water and other liquids
- Perfect for every plumber's truck

## Nipple Caddies

Part #	Size	Outside Dimensions
T1005	1/2"	11" x 8" x 9" tall
T1007	3/4"	14" x 8" x 9" tall
T1057	1/2" / 3/4" Combo	18" x 8" x 9" tall
T1010	1"	15" x 8" x 9" tall
T1015	1-1/2"	21" x 7" x 10" tall
T1020	2"	23" x 9" x 10" tall

T1007



T1020



T1015



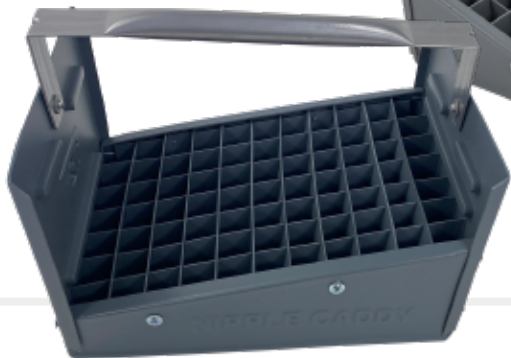
T1057



T1010



T1005



# ORGANIZATIONAL TRAYS and TOOL TOTES



## ORGANIZATIONAL TRAYS AND TOTE

**THESE TRAYS ARE TOUGH - MADE FOR TRADESPEOPLE.  
NO-STICK MATERIAL AND ALL BUT T1025 COME WITH DIVIDERS**

- **T1000:** Tray can be divided into compartments as small as 4.5" x 1.5". Includes six dividers. Extra dividers available.
- **T1025:** Deep handy carrier with extra duty handle. Does not have dividers like other models.
- **T1050:** Available in Blue, Grey and custom colors.
- **T1065:** Straddles a 2x4" or 2x6" board. Lid Included. Large and roomy; with 6 dividers to customize your space. Extra dividers available.
- **T1065-L:** Lid only for T1065, creates stackable storage system.

## HDPE Universal Tub/Mix-a-crete

Name	Part #	Description	Size(O.D.)
Utility Tub /mix-a-crete	T2620	Large Utility Tub /mix-a-crete	26" x 20" x 7"



T1025



T1050



T1000

Name	Part #	Description
Tote Trays/ Organizers	T1000	15" x 9" x 3"
Tote Trays/ Organizers	T1025	16 3/4" x 11 3/4" x 4 1/2"
Tote Trays/ Organizers	T1050	15" x 9" x 5"
Tote Trays/ Organizers	T1065	22" x 14" x 8" High
Tote Trays/ Organizers	T1050 BLU	15" x 9" x 5"
Extra dividers available		

## CEMENT AND MORTER MIX TUB

NEW  
PRODUCT

- Super-tough non-stick general use tub
- Mix concrete and rinse out
- General storage and carrying
- Thick HDPE plastic



T2620



T1050BLU



T1065



✉ orderdesk@benjaminmfg.com  
☎ 770-941-1433 800-343-1756

📍 3215 S. Sweetwater Rd  
Lithia Springs GA 30122

# T1075 TOTE / DIRT RIDER

## UTILITY TUB BOXES



### T1075 TOTE

#### USE BY ITSELF OR COMBINE WITH DIRT RIDER

- **T1075:** Tray fits perfectly and securely into the grooves of Dirt Rider
- Just the right tray for carrying longer tools and bulky parts such as copper or galvanized fittings, or nail boxes
- Can be divided into 8 compartments 6" x 5" x 6" deep
- Includes six dividers. Extra dividers available

#### T1075 Tote & Dirt Rider

Name	Part #	Description
Dirt Rider Only	T1075-DR	29" x 14" x 3 1/2"
Dirt Rider / 1075 Tray Combo	T1075- DRTT	29" x 14" x 7" (W/T1075)
T1075 Tote	T1075	24" x 12" x 6"
T1075 Tote Blue	T1075 BLU	24" x 12" x 6"
Extra dividers	T1075-XD	Set of 6 dividers

### DIRT RIDER

#### USE BY ITSELF FOR TOOLS AND PARTS OR SNAP ON OUR POPULAR BENJAMIN T1075 TOTE TRAY

- Glides over dirt on two runners
- Comes with a 6 foot rope
- Easy to clean. Simply hose off
- It's tough - high molecular weight polyethylene



### TUB BOXES

#### Styrene Utility Tub Boxes

Name	Part #	Description	Size (I.D.)	Size (O.D.)
Plastic Tub Box	1313	in-cavity pipe setting/cementing/utility	13" x 13" x 7" Deep	15" x 15" x 7" Deep
Plastic Tub Box	1410	in-cavity pipe setting/cementing/utility	12" x 8" x 6" Deep	14" x 10" x 6" Deep

- Best-selling tub boxes set the standard used by plumbers nationwide
- Constructed of high impact plastic
- Will not fall apart in the rain like cardboard
- Easily cut with utility knife for openings
- Rodent-proof
- Can be used individually or in pairs (according to local codes)



1313



1410





# ACCESS PANELS & COVERS



## ACCESS PANELS

- 2-Piece units with frame and sliding door
- Provides access to pumps on whirlpools and spas, tub/shower valve bodies, hidden shut-off or regulating valves, trap primers, clean-outs, etc.
- Nothing to wear out, white finish, no snaps, beveled edge, no screws
- Textured finish, no hinges, can be painted, no springs
- High impact plastic

## ACCESS COVERS

- An inexpensive way to cover an access
- 1-Piece units for simple screw-on applications
- Pre-drilled holes in corners
- Textured finish for easy painting
- High impact plastic material

### Access Panels

Part #	SIZE ID (IN)	SIZE OD (IN)
	Width X Height	Width X Height
AP 55	4.75 x 4.75	7.5 x 8
AP 88	8 x 7.875	11.75 x 11.75
AP 96	9.125 x 6.125	12.375 x 9.5
AP1212	11.375 x 11.25	14.75 x 14.625
AP 1414	13.35 x 13.25	16.75 x 16.625
AP 1426	13 x 25.625	16.75 x 29.5

### Access Covers

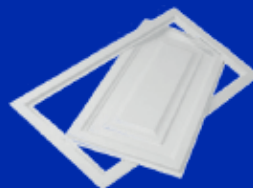
Part #	SIZE ID (IN)	SIZE OD (IN)
ACF-1212	11x11	12 x 12
ACF-1717	16x16	17 x 17



AP96



AP55, AP88, AP1212, AP1414



AP1426



ACF1212

ACF1717

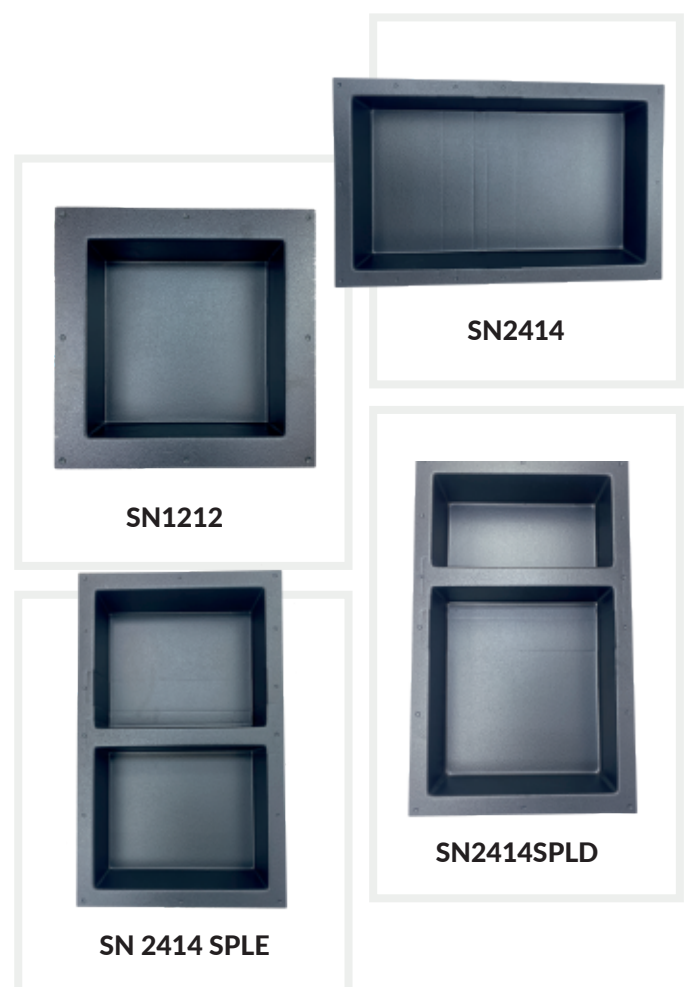


# SHOWER NICHE TILE TEMPLATES



SHOWER NICHE			
Name	Part #	Description	Size (O.D.)
Square Shower Niche	SN1212	12" square internal size	16" x 16"
Shower Niche	SN2414	24x14" I.D. rectangle	28.5" x 17.5"
Shower Niche	SN2414SPLD	24x14" I.D. rectangle Split section w small (7.5 x 14" I.D.) and large (16" x 14" I.D.) section	28.5" x 17.5"
Shower Niche	SN2414SPLE	24x14" I.D. rectangle Split section even 12"x14" I.D. sections	28.5" x 17.5"

- Matte finish for great tile adhesive and grout adherence
- Luxurious 4 inch depth to accommodate oversized Shampoo bottles
- Designed to accommodate Bluetooth speakers, various shampoo sizes and 12 oz drinks
- Countersunk drill guides set up for standard 16" frame spacing or custom mounts
- Rectangle available in 3 options - open, 2-section with equal compartments, and 2-section with unequal compartments (smaller one sized to fit 12 oz beverage or long bluetooth speaker after tiling)
- Made in USA of thick, sturdy, ABS plastic



✉ orderdesk@benjaminmfg.com  
☎ 770-941-1433 800-343-1756

📍 3215 S. Sweetwater Rd  
Lithia Springs GA 30122

# SINKS

## FOAM SPACER AND HANDI WRAPS



### SINKS - Lustre Lav

Name	Part #	Description	Size
Oval Lav	1720-2	White oval drop-in	17" x 20"
Round Lav	1800-2	White round drop-in	18" x 20"
Undermount Oval Lav	1710	White oval undermount	14" x 14"
Undermount Round Lav	1810	White round undermount	18" x 20"
Bar Sink	1515	White, Black, and other colors	15" x 15"
Other colors available - call us!			



- A Hard, scratch-resistant multi-layer ABS/Acrylic material
- Perfect for vanity, RVMH, marine and bar applications
- Multiple colors available
- Three different faucet hole arrangements available - single, double, triple

**CALL FOR CUSTOM COLOR RUNS FOR YOUR APPLICATION**

### FOAM SPACER

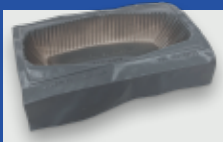
- 4" High spacer wrap in either 82 foot roll or 4" x 50" single use size
- Easily installed
- Keeps concrete from pipe
- Replaces Styrofoam, coffee can, and duct tape
- Great labor save - eliminates the need to chip out concrete
- Item # FS44 - 4" x 50"
- Item # FS82 - 4" x 82'



### HANDI WRAP MULTI-PURPOSE FOAM TAPE

- A closed polyethylene foam specifically designed for wrapping
- Pipe wrap for traps and pipes
- Pressure-sensitive adhesive backing
- Full 2" adhesive coverage (will not curl)
- Installs quickly and easily
- Multi-Use/Insulation
- White color for a pleasing appearance
- Meets ADA requirements
- Made in the USA
- 125" thick x 2" wide x 40' Roll
- Item # HCW24





### Tub protectors

- Industry leading foam or no-foam bottom
- 100+ sizes available



### Dishwasher Pan

- Unique industry design & color
- Strong HDPE

### Shower Base Protectors

- Multifit model for stocking
- 25+ fixed sizes



### HVAC Condensate Drain Pans

- Durable HDPE with reinforced corners
- Galvanized steel



### Cleanout Cover Plates

- 16 variations in Chrome & White

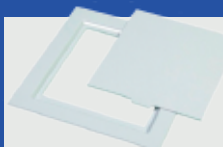


### Shower Niche Tile Templates

- 4 sizes/shapes in Strong ABS

### Access Panels & Covers

- 2-piece panels and 1-piece covers
- 7 Sizes



### Nipple Caddies

- 6 sizes for all needs
- Won't corrode, rust or crush



### Utility Tub Boxes

- The Original
- 2 sizes available



### Square Galvanized Pans

- Water and HVAC applications
- Drilled with PVC adapters

### Water Heater Pans

- Plastic or Aluminum
- 6 Sizes with PVC/CPVC



### Organizational Trays and Tote Tray Line

- Tool totes with dividers
- Dirt Rider and Mix-a-Crete



### Water Heater Stands

- Strong, Galvanized steel stands
- 2 sizes



### Ball Valves

- PVC & CPVC ball valves
- Multiple sizes

### Washing Machine Pan

- Now in durable, flexible HDPE
- New Black color option



### Foam Spacer and Handi wraps

- Closet wrap and pipe wraps



**MADE IN USA**



BenjaminManufacturing



BenjaminMFG



[www.benjaminmfg.com](http://www.benjaminmfg.com)

**QUESTIONS AND ORDERS**



**BENJAMIN**  
MANUFACTURING LLC



*All of our thermoformed products are recyclable!*



[orderdesk@benjaminmfg.com](mailto:orderdesk@benjaminmfg.com)  
770-941-1433 800-343-1756



3215 S. Sweetwater Rd  
Lithia Springs GA 30122